



Whites Corner

Whitley, SN12 8QQ

- Three bed detached bungalow
- Good parking with option for more
 - Popular village location
 - Commutable to Bath
 - Village amenities nearby
- Generous living space
- Wrap around garden
- Close to Corsham and Melksham
- Good bus connections
- Viewing recommended

£425,000 Freehold



Hall

External door to front, radiator and doors to dining room, bathroom and bedrooms.

Dining Room

7'4" x 10'8"

Window to side elevation, radiator, door to kitchen and opening to living room.

Living Room

13'3" x 19'11"

Two windows to side and two windows to rear elevation with two radiators.

Kitchen

11'7" x 9'1"

Fitted with a matching range of base and eye level units with worktop space over, 1+1/2 bowl sink, integrated fridge and dishwasher, fitted oven and four ring hob, window to side elevation and door to utility.



Utility

4'1" x 9'1"

Worktop with space for washing machine and tumble dryer, window to side elevation and door to inner hallway.

Inner Hallway

Double door to garden and door to pantry.

Pantry

4'9" x 4'11"

Bedroom One

9'11" x 14'7"

Two windows to front elevation and radiator.

Bedroom Two

9'10" x 12'11"

Window to front elevation, fitted wardrobes and radiator.

Bedroom Three

8'0" x 9'3"

Window to rear elevation, storage cupboard and radiator.

Bathroom

Fitted with a four piece suite comprising bath, separate shower enclosure, wash hand basin and WC with heated towel rail.

Garage

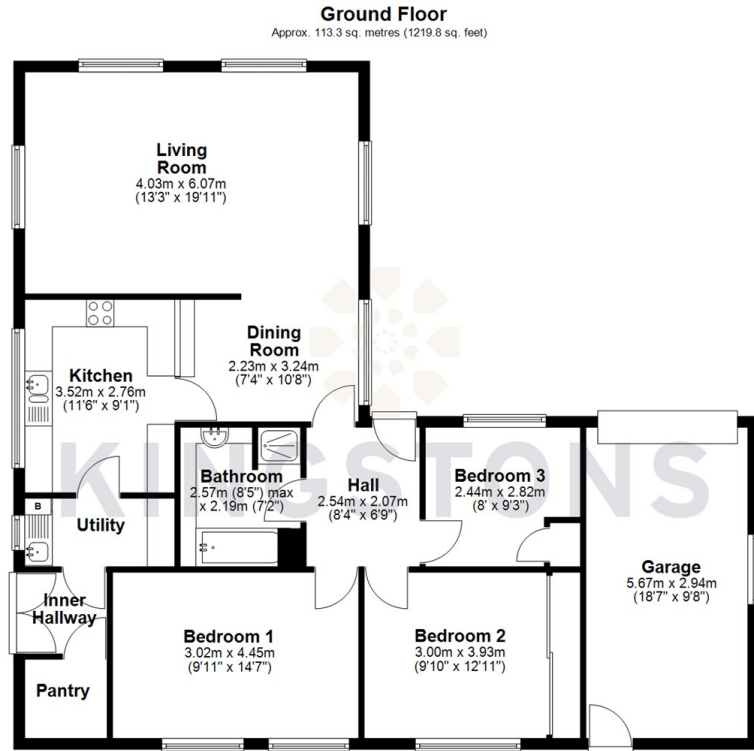
Window to side elevation, up and over door and pedestrian door to rear.

Outside

Driveway parking for several vehicles and option to extend to allow for more, wrap around garden.



Local Authority **Wiltshire**
Council Tax Band **D**
EPC Rating **C**



Total area: approx. 113.3 sq. metres (1219.8 sq. feet)




KINGSTONS
Melksham Office

11 High Street, Melksham,
Wiltshire, SN12 6JR

Contact

01225709115
sales@kingstons.biz
www.kingstons.biz

Agents Note: Whilst every care has been taken to prepare these particulars, they are for guidance purposes only. All measurements are approximate and for general guidance purposes only and whilst every care has been taken to ensure accuracy, they should not be relied upon and potential buyers/tenants are advised to recheck the measurements.